



## CLUB NAUTIQUE ALPIN SERRE-PONÇON

Chemin de Chadenas - 05200 EMBRUN

FRANCE

☎ +33 (0) 492 43 00 02

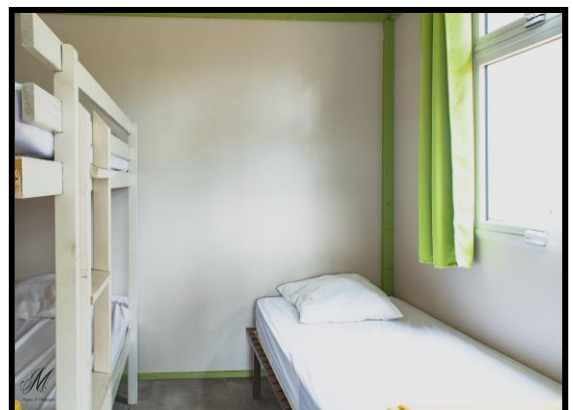
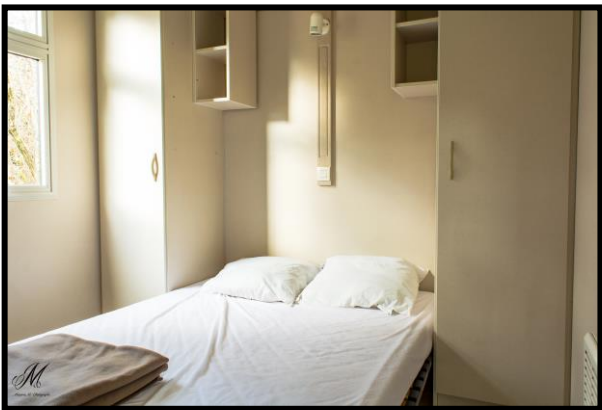
E-mail : [cnasp@wanadoo.fr](mailto:cnasp@wanadoo.fr)

Website : [www.cna-embrun.com](http://www.cna-embrun.com)

# CHALETS GITOTEL:

## Le Guillaume - le Chabrières - le Morgon

### Chalet 5 people



#### Description :

The chalet is composed of 2 independent bedrooms, a kitchen-dining room, a bathroom and a covered terrace. The surface is 33,16 m<sup>2</sup>. There are 3 electric heaters.

**The parent's bedroom** is equipped with a double bed 140x200 (slatted bed base) and a wardrobe.

**The children's bedroom** is composed of a simple bed, 2 bunk beds and a wardrobe.

**The dining room** includes a table, a bench, chairs and a storage unit.

**The kitchen** includes 2 gas hotplates, a microwave, 1 filter coffee maker, 2 storage units with the crockery, a stainless steel sink and a fridge of 100L.

**The bathroom** is equipped of a shower cubicle, a toilet, a bowl and a hot water tank of 75L.

**The covered terrace** is equipped of garden furniture.

**You have to bring your household linen:**

**sheets, pillowcases, towels, tea towels...**

**We only provide mattress protector, pillows and blankets**



### Chalets' rental terms « Gitôtel 5 people »

In July/August, we only accept week stays:

**Arrival** On Saturday between 4pm and 6pm

**Departure** On Saturday before 10am

You have 24h to arrive after your expected arrival date. After, the chalet is available for others clients.

Water, gas and electricity consumptions are included in the rental price.

An inventory is made before your arrival with the previous tenant and with you at departure.

**The booking** is accepted as soon as we received your deposit: 30% of the amount of the rental plus 16 € of booking fee. We also demand 2 deposits: 200 € (equipment guarantee) and 50 € (cleaning guarantee). Foreign people have to give these guarantees by cash upon arrival. We give you back these guarantees at departure, except if, at the inventory, there are damages or cleaning to do. To get your money back, you have to leave during the opening hours of the reception.

- **The balance** is due 30 days before the first day of the stay.
- The deposit can be refund if the tenant renounces to the rental by registered letter, within 8 days after sending this contract. After this period, the rental is firm and binding, the deposit payed will not be refund and the tenant will have to pay the balance.
- No refund will be made if you leave earlier or modify your stay.

**Send us back this document, dated and signed, with the mention « read and approved, signed and agreed » with your booking form.**

Made in : ..... On : .....

NAME, first name and signature of the tenant: .....